

GEN4



MIDWEST
MACHINERY CO



CREATING RUN PAGE SETS

How to create a Run Page Set on a Gen4 display as well as how to change the active set.

Gen4 - Creating Run Page Sets

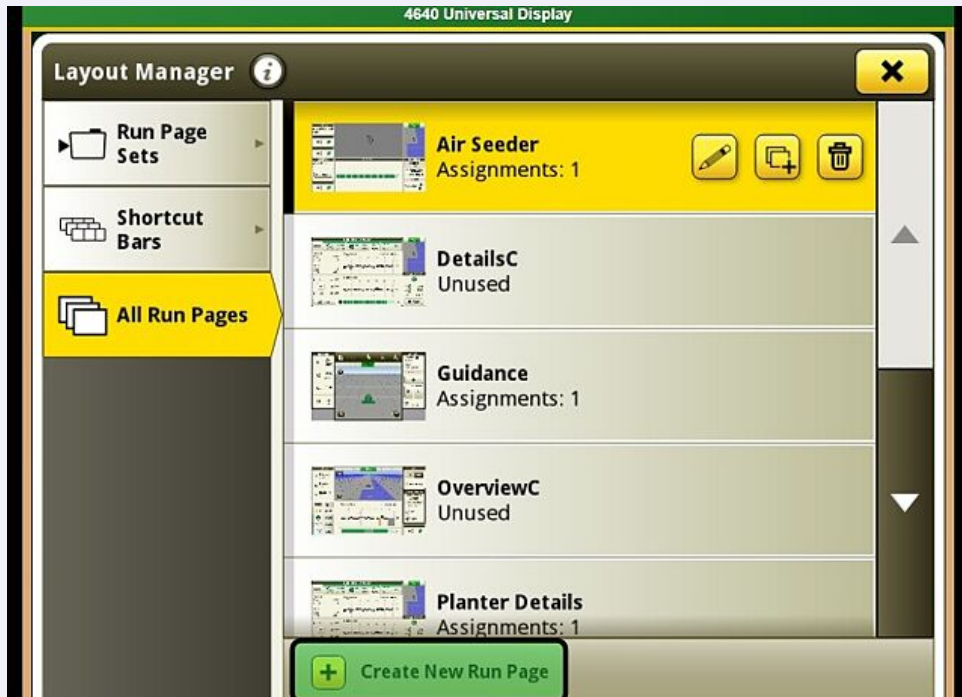
How to create a Run Page Set on a Gen4 display as well as how to change the active set. These can be created for each part of the growing season.

- 1 Go into the Layout Manager



2

Create ALL run pages that Operator would like to include in the set in the "All Run Pages" section

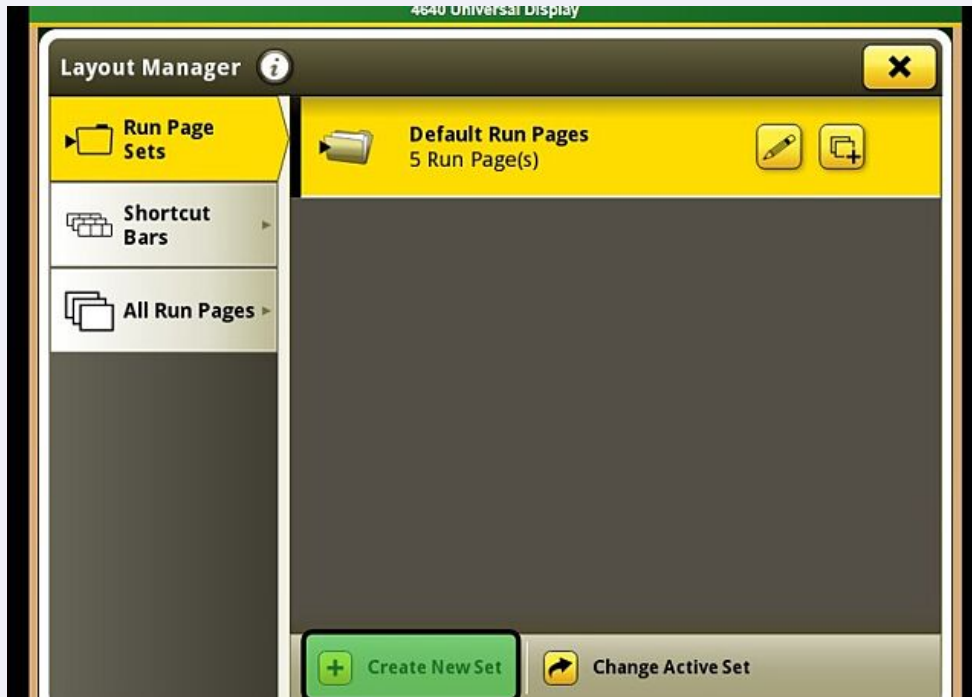


3

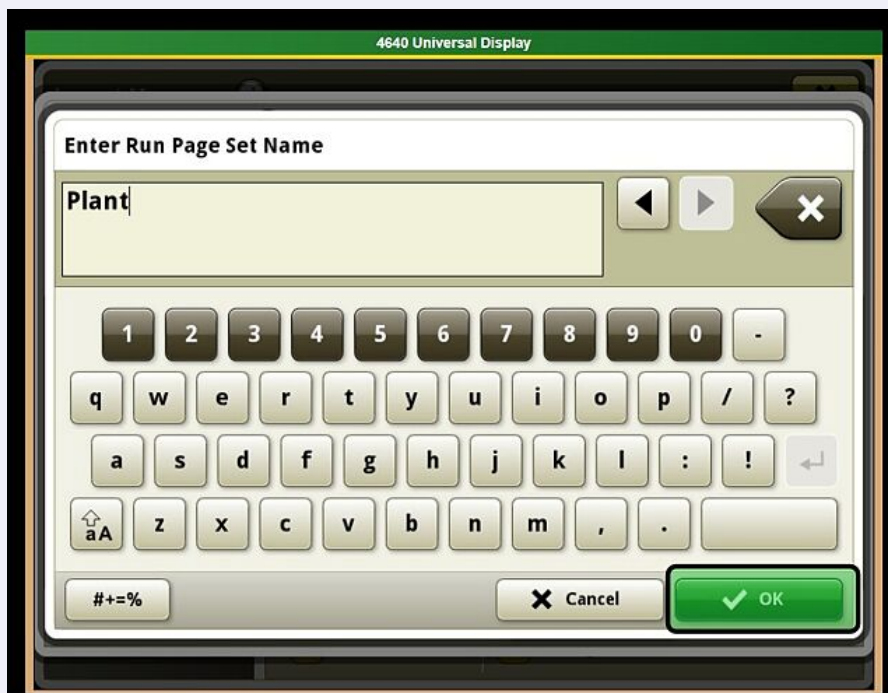
Once all run pages have been created, go back to the "Run Page Sets" section



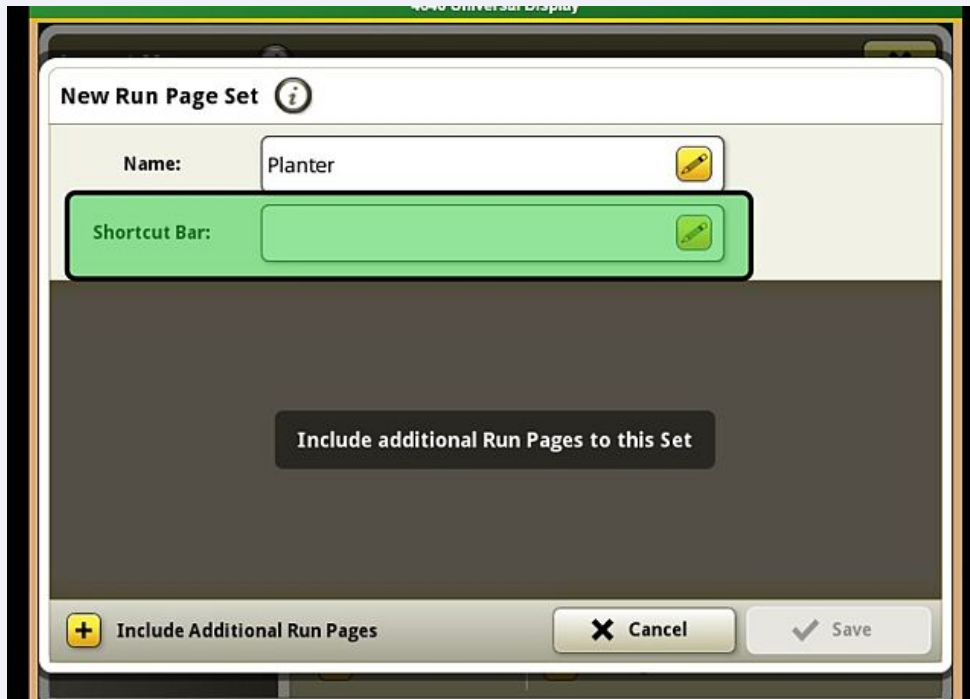
- 4 Select "Create New Set" at the bottom of the screen



- 5 Name the Run Page Set



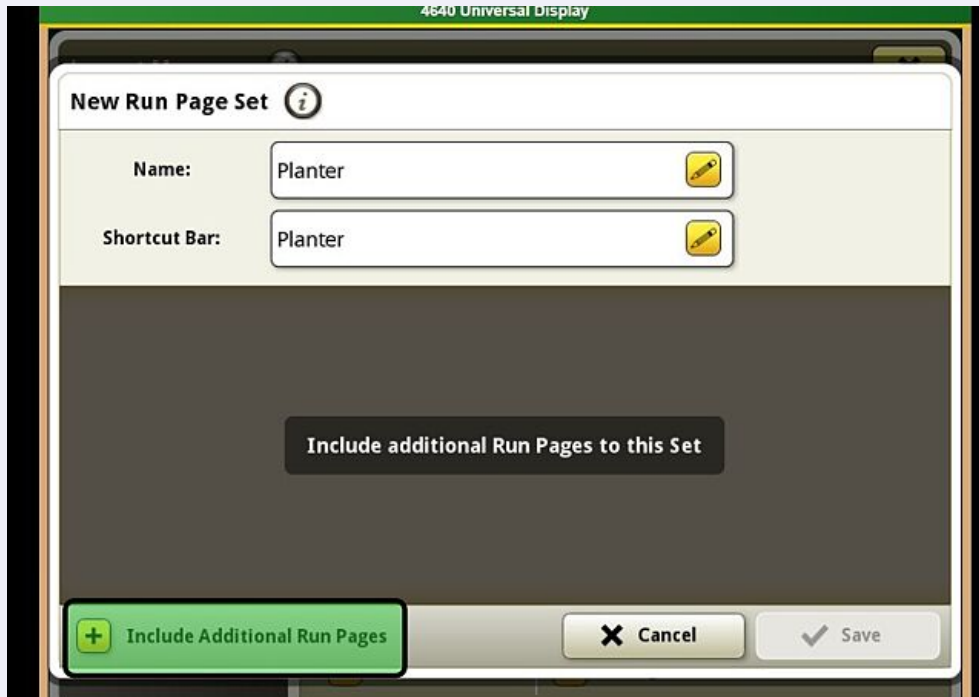
6 Select a Shortcut Bar to go with the Run Page Set.



! Shortcut bars can be copied and customized as desired. Ex. For a planting run page set, Operator may add planter functions like the SeedStar app and the section control master to the shortcut bar.

7

Select "Include Additional Run Pages" and add all the run pages Operator previously created and would like to include for the selected set



Example of Step 7: For a SeedStar4 planter, Operator would likely add the Planter Details page, a Planter Summary page, and a Guidance page

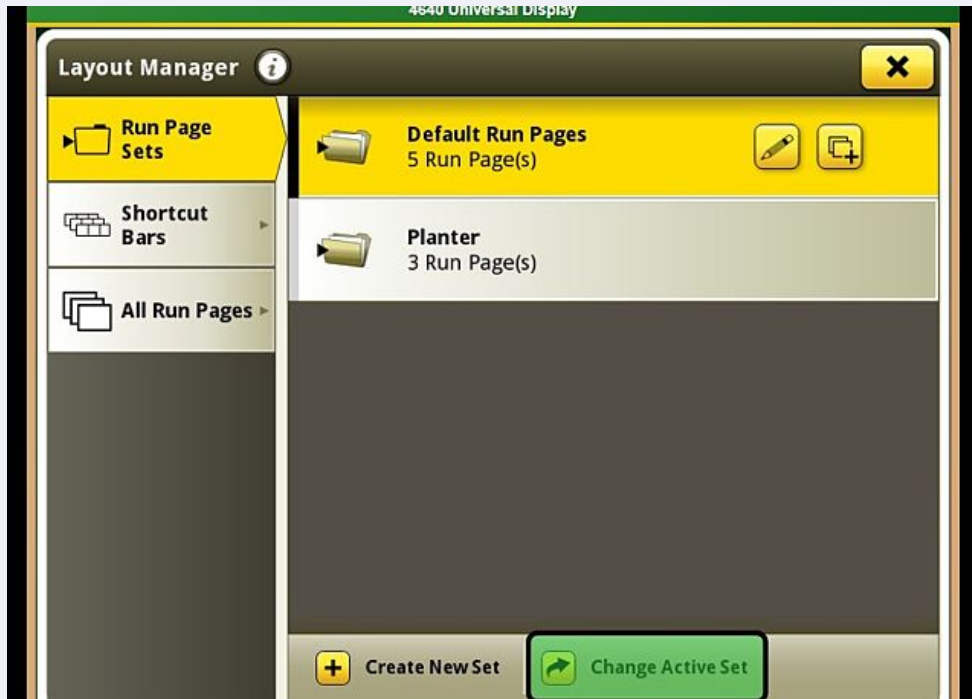
8

Once all run pages have been added to the set, select "Save." Once saved, the set is created

Changing Active Set

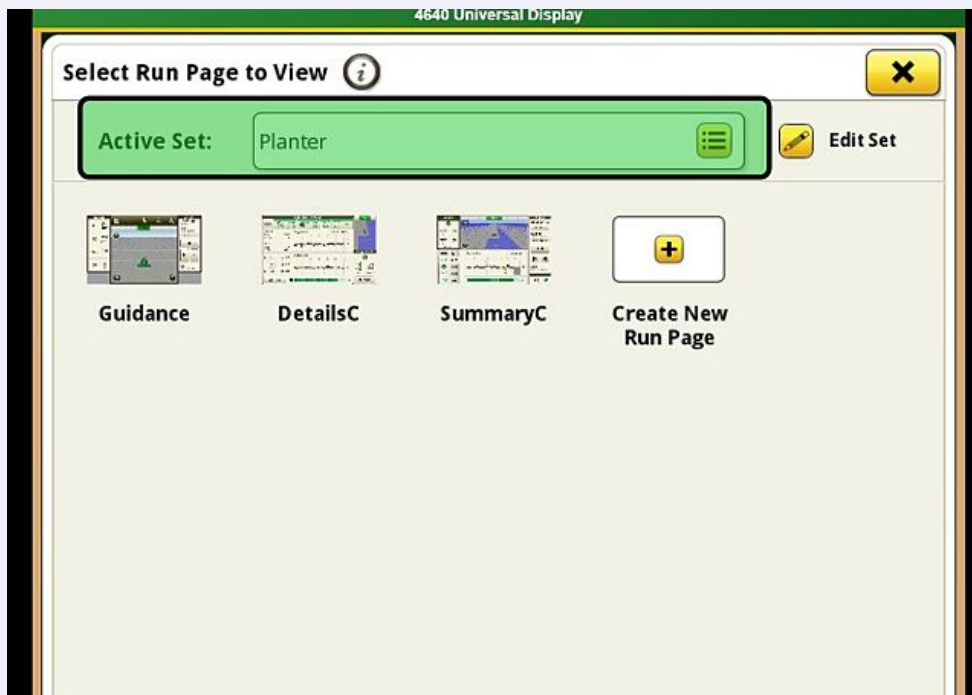
9

To Change the Active Set, select "Change Active Set" under the Run Page Sets section



10

Select the white bar next to "Active Set:"



11 Select the Run Page set Operator would like to enable



12 Select "Ok"



13

After selecting Ok, the selected run page set has been enabled. Operator may exit out of the Main Menu and back to the run pages.